



# Raguse+Voss

METALLGIEßEREI GmbH

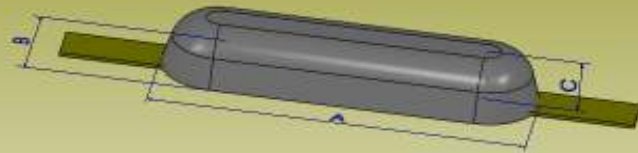
Telefon: (0471) 98209-0 | Telefax: (0471) 98209-10

Beratung · Entwicklung · Produktion

## Anoden

Anodes

### Weld on Type



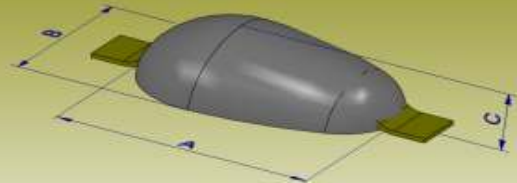
## Zink (Zinc)

<b>Bezeichnung</b> Type	<b>Maße</b> (AxBxC) Dimensions (AxBxC)	<b>Gewicht</b> Weight	<b>Loch Mittenmaß</b> (D) hole distance (D)	<b>RV-Artikel-Nr</b> RV-Article-No.
ZN 15/5,5	300 x 90 x 40	5,5 Kg		KOK_00089

## Anoden

Anodes

### Weld on Type



## Zink (Zinc)

<b>Bezeichnung</b> Type	<b>Maße</b> (AxBxC) Dimensions (AxBxC)	<b>Gewicht</b> Weight	<b>Loch Mittenmaß</b> (D) hole distance (D)	<b>RV-Artikel-Nr</b> RV-Article-No.
ZN 1/07	110 x 60 x 26	0,7 Kg		KOK_00016
ZN 2/1	120 x 80 x 23	1,0 Kg		KOK_00015
ZN 10/3 II	236 x 80 x 38	2,6 Kg		KOK_00023
ZN 10/3	170 x 100 x 40	3,0 Kg		KOK_00094
ZN 10/4	236 x 109 x 43	4,0 Kg		KOK_00345
ZN 16/7	300 x 160 x 35	7,0 Kg		KOK_00024
ZN 20/10	300 x 160 x 45	10,0 Kg		KOK_00084

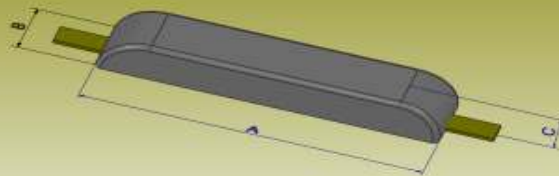
## Aluminium (Aluminium)

<b>Bezeichnung</b> Type	<b>Maße</b> (AxBxC) Dimensions (AxBxC)	<b>Gewicht</b> Weight	<b>Loch Mittenmaß</b> (D) hole distance (D)	<b>RV-Artikel-Nr</b> RV-Article-No.
TG0,5AL	120 x 80 x 23	0,5 Kg		KOK_00195
TG1,3AL	170 x 100 x 40	1,3 Kg		KOK_00175
TG4,2AL	300 x 160 x 45	4,2 Kg		KOK_00171
AL 55/10	375 x 224 x 70	10,0 Kg		KOK_00209

# Anoden

Anodes

## Weld on Type



## Zink (Zinc)

<b>Bezeichnung</b> Type	<b>Maße</b> (AxBxC) Dimensions (AxBxC)	<b>Gewicht</b> Weight	<b>Loch Mittenmaß</b> (D) hole distance (D)	<b>RV-Artikel-Nr</b> RV-Article-No.
ZN 3/0,3	95 x 30 x 14	0,3 Kg		KOK_00017
ZN 26/13	465 x 110 x 40	13,0 Kg		KOK_00079
ZN 35/17	520 x 120 x 40	17,0 Kg		KOK_00064
H170Z	600 x 135 x 35	17,0 Kg		KOK_00300
ZN 42/22	540 x 135 x 50	22,0 Kg		KOK_00049
ZN 60/27,5	800 x 120 x 40	27,5 Kg		KOK_00059
ZN 75/34	1000 x 120 x 45	34,0 Kg		KOK_00102
ZN 100/50	1000 x 120 x 60	50,0 Kg		KOK_00098

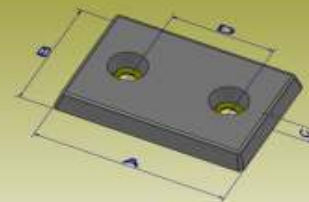
## Aluminium (Aluminium)

<b>Bezeichnung</b> Type	<b>Maße</b> (AxBxC) Dimensions (AxBxC)	<b>Gewicht</b> Weight	<b>Loch Mittenmaß</b> (D) hole distance (D)	<b>RV-Artikel-Nr</b> RV-Article-No.
AL 3/0,1	95,5 x 30 x 13,5	0,1 Kg		KOK_00372
RG2,5AL	300 x 90 x 40	2,5 Kg		KOK_00176
RG5,5AL	465 x 110 x 40	5,5 Kg		KOK_00179
AI 30/6	330 x 135 x 50	6,0 Kg		KOK_00368
RG7,2AL	520 x 120 x 40	7,2 Kg		KOK_00187
AL 45/9	680 x 128 x 40	9,0 Kg		KOK_00270
RG12AL	800 x 120 x 40	12,0 Kg		KOK_00191
AI 75/14	1000 x 120 x 45	14,0 Kg		KOK_00238
AI 100/20	1000 x 120 x 60	20,0 Kg		KOK_00240
AI 300/28	1000 x 120 x 80	28,0 Kg		KOK_00236

# Anoden

Anodes

## Bolt on Type



## Zink (Zinc)

<b>Bezeichnung</b> Type	<b>Maße</b> (AxBxC) Dimensions (AxBxC)	<b>Gewicht</b> Weight	<b>Loch Mittenmaß</b> (D) hole distance (D)	<b>RV-Artikel-Nr</b> RV-Article-No.
RV024ZV	200 x 100 x 20	2,4 Kg	110	KOK_00204
FB - 8	300 x 150 x 30	8,0 Kg	160	KOK_00022
RV114ZV	300 x 150 x 40	11,4 Kg	160	KOK_00411
CZ-9E	300 x 150 x 50	13,2 Kg	160	KOK_00169
CZ-9F	300 x 150 x 60	17,0 Kg	160	KOK_00376
CZ-H1-08T	508 x 100 x 53	17,3 Kg	250	KOK_00332
RV199ZV	340 x 180 x 50	20,5 Kg	180	KOK_00260
RV253ZV	300 x 200 x 65	25,3 Kg	160	KOK_00012

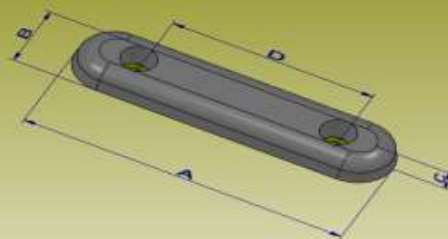
## Aluminium (Aluminium)

<b>Bezeichnung</b> Type	<b>Maße</b> (AxBxC) Dimensions (AxBxC)	<b>Gewicht</b> Weight	<b>Loch Mittenmaß</b> (D) hole distance (D)	<b>RV-Artikel-Nr</b> RV-Article-No.
RV014AV	200 x 100 x 30	1,4 Kg	110	KOK_00406
RV023AV	300 x 150 x 20	2,3 Kg	160	KOK_00407
RV034AV	300 x 150 x 30	3,4 Kg	160	KOK_00021
RV055AV	300 x 150 x 50	5,5 Kg	160	KOK_00366
RV062AV	300 x 200 x 40	6,2 Kg	160	KOK_00173
RV068AV	300 x 150 x 60	6,8 Kg	160	KOK_00408
RV093AV	400 x 150 x 50	9,3 Kg	180	KOK_00189
RV101AV	300 x 200 x 70	10,1 Kg	160	KOK_00178
RV124AV	300 x 200 x 75	12,4 Kg	160	KOK_00371
RV130AV	400 x 180 x 70	13,4 Kg	180	KOK_00310
RV151AV	600 x 180 x 52	15,1 Kg	400	KOK_00409

# Anoden

Anodes

## Bolt on Type



## Zink (Zinc)

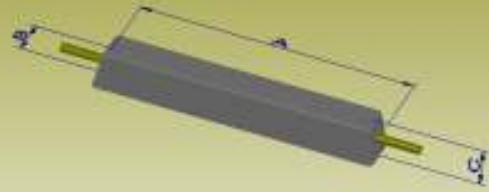
<b>Bezeichnung</b> Type	<b>Maße</b> (AxBxC) Dimensions (AxBxC)	<b>Gewicht</b> Weight	<b>Loch Mittenmaß</b> (D) hole distance (D)	<b>RV-Artikel-Nr</b> RV-Article-No.
RV055ZO	300 x 130 x 30	7,9 Kg	155	KOK_00265
RB - 14	360 x 180 x 45	15,0 Kg	180	KOK_00013
RB - 20	540 x 130 x 53	20,1 Kg	340	KOK_00196
RB - 30	460 x 200 x 64	33,5 Kg	260	KOK_00170

## Aluminium (Aluminium)

<b>Bezeichnung</b> Type	<b>Maße</b> (AxBxC) Dimensions (AxBxC)	<b>Gewicht</b> Weight	<b>Loch Mittenmaß</b> (D) hole distance (D)	<b>RV-Artikel-Nr</b> RV-Article-No.
RV057AO	360 x 180 x 45	5,7 Kg	180	KOK_00181
RV081AO	460 x 200 x 44	8,1 Kg	260	KOK_00405
RV079AO	540 x 130 x 53	7,9 Kg	340	KOK_00196
RV156AO	540 x 200 x 65	15,6 Kg	340	KOK_00192

# Tank Anoden

Tank Anodes



## Zink (Zinc)

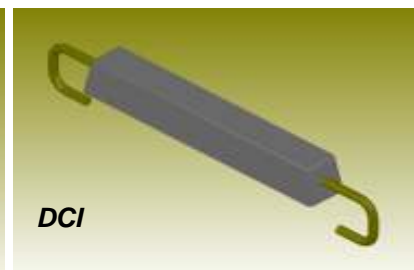
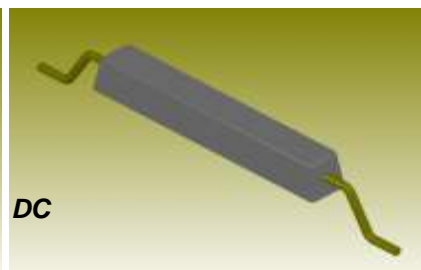
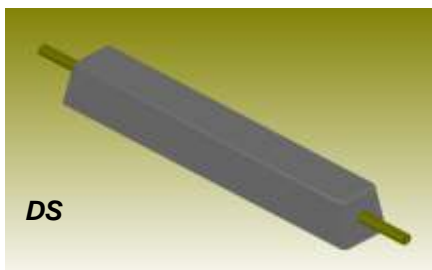
<b>Bezeichnung</b> Type	<b>Maße</b> (AxBxC) Dimensions (AxBxC)	<b>Gewicht</b> Weight	<b>Loch Mittenmaß</b> (D) hole distance (D)	<b>RV-Artikel-Nr</b> RV-Article-No.
TZn 4,5	250 x 50 x 50	4,6 Kg		KOK_00110
TZn 5,4	300 x 50 x 50	5,0 Kg		KOK_00114
TZn 5,8	410 x 44 x 45	5,8 Kg		KOK_00107
KST1050	1000 x 30 x 26	6,0 Kg		KOK_00106
	300 x 60 x 60	7,5 Kg		KOK_00314
TZn 7,5	533 x 51 x 43	7,5 Kg		KOK_00112
TZn 10	533 x 56 x 51	10,0 Kg		KOK_00095
ZT 120	820 x 44 x 45	12,0 Kg		KOK_00108
TZn 14	1100 x 50 x 40	12,0 Kg		KOK_00101
TZn 15	600 x 60 x 60	15,0 Kg		KOK_00109
TZn 19	500 x 70 x 70	16,5 Kg		KOK_00018
TZn 23	1100 x 58 x 52	23,0 Kg		KOK_00103
TZn 30	1200 x 63 x 60	30,0 Kg		KOK_00099

## Aluminium (Aluminium)

<b>Bezeichnung</b> Type	<b>Maße</b> (AxBxC) Dimensions (AxBxC)	<b>Gewicht</b> Weight	<b>Loch Mittenmaß</b> (D) hole distance (D)	<b>RV-Artikel-Nr</b> RV-Article-No.
TAL 8/1,7	250 x 59 x 50	1,7 Kg		KOK_00199
TAL 10/3	580 x 40 x 40	2,5 Kg		KOK_00237
TAL 26/5	1100 x 40 x 40	5,0 Kg		KOK_00235
TAL 32/6	600 x 60 x 60	6,0 Kg		KOK_00231
TAL 35/7	1100 x 50 x 40	6,9 Kg		KOK_00233
TAL 55/10	1100 x 56 x 56	10,4 Kg		KOK_00232
TAL 75/13	1200 x 70 x 63	13,5 Kg		KOK_00234

### Tank Anoden mit Halter Typ:

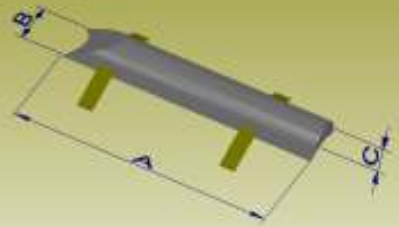
Tank anodes with Insert Type:



# Ruder-Anoden

Rudder Anodes

## Weld on Type



## Zink (Zinc)

<b>Bezeichnung</b> Type	<b>Maße</b> (AxBxC) Dimensions (AxBxC)	<b>Gewicht</b> Weight	<b>Loch Mittenmaß</b> (D) hole distance (D)	<b>RV-Artikel-Nr</b> RV-Article-No.
ZN 30/14	500 x 100 x 55	14,0 Kg		KOK_00048

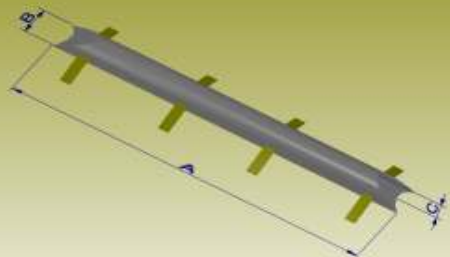
## Aluminium (Aluminium)

<b>Bezeichnung</b> Type	<b>Maße</b> (AxBxC) Dimensions (AxBxC)	<b>Gewicht</b> Weight	<b>Loch Mittenmaß</b> (D) hole distance (D)	<b>RV-Artikel-Nr</b> RV-Article-No.
Al 30/5	500 x 100 x 55	7,0 Kg		KOK_00172

# Ruder-Anoden

Rudder Anodes

## Weld on Type



## Zink (Zinc)

<b>Bezeichnung</b> Type	<b>Maße</b> (AxBxC) Dimensions (AxBxC)	<b>Gewicht</b> Weight	<b>Loch Mittenmaß</b> (D) hole distance (D)	<b>RV-Artikel-Nr</b> RV-Article-No.
ZN 62/28	1000 x 100 x 55	28,0 Kg		KOK_00036

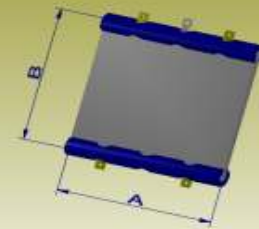
## Aluminium (Aluminium)

<b>Bezeichnung</b> Type	<b>Maße</b> (AxBxC) Dimensions (AxBxC)	<b>Gewicht</b> Weight	<b>Loch Mittenmaß</b> (D) hole distance (D)	<b>RV-Artikel-Nr</b> RV-Article-No.
Al 62/11	1000 x 100 x 55	11,0 Kg		MOD_5507

# Platten-Anoden

Plates Anodes

## Bolt on Type



## Zink (Zinc)

<b>Bezeichnung</b> Type	<b>Maße</b> (AxB) Dimensions (AxBxC)	<b>Gewicht</b> Weight	<b>Loch Mittenmaß</b> (D) hole distance (D)	<b>RV-Artikel-Nr</b> RV-Article-No.
PL18	500 x 500	18,0 Kg		KOK_00039
PL36	1000 x 500	36,0 Kg		KOK_00040

Auf Wunsch können auch andere Sondergrößen gefertigt werden  
On request also other sizes can be manufactured

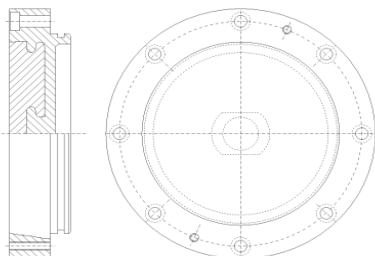
# Sonderformen

Special Shapes

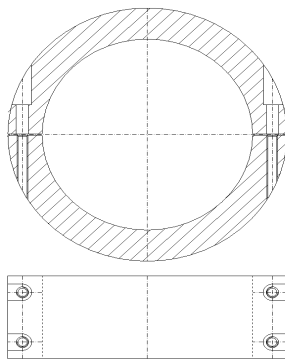
Sonderanoden werden nach Muster oder Zeichnung gefertigt

Spezial shapes are made from samples or drawings

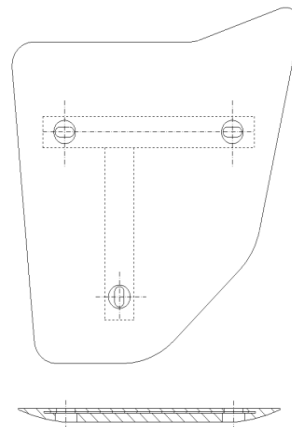
Propellerzinkschutz



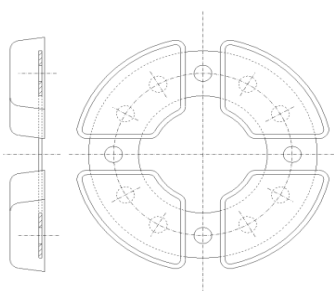
Wellenanoden



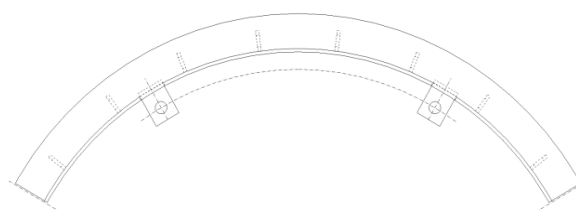
Plattenanoden



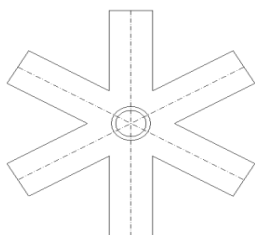
Ringanoden



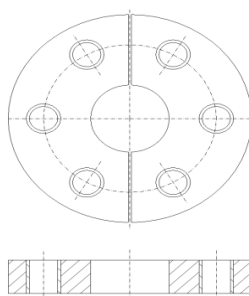
Ringanodensegmente



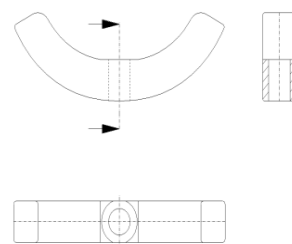
Sternanoden



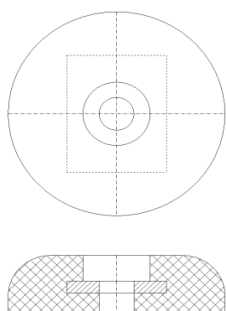
Zinkringe



Zinksegmente



Zinkscheiben



Zinkstopfen

